



*Pecan Manor*  
CONFERENCE & FUNCTION VENUE

## Welcome to Pecan Manor Boutique Conference and Function Venue.

Pecan Manor is nestled in the middle of a Pecan Nut Forest in the foothills of the Magaliesberg Mountains. A fascinating array of birdlife and a variety of game such as Giraffe, Sable and Nyala makes Pecan Manor a unique experience in a tranquil setting.

Away from the hustle and bustle of city life, Pecan Manor is the ideal venue for hosting conferences and special functions and is a comfortable 45 minute drive from Pretoria, Johannesburg and Rustenburg.

We will cater for all your conferencing requirements whether it is a brainstorming week, strategy session or team build breakaway.

Our 4 conference rooms are equipped with standard equipment and can be set to your individual preference.

Pecan Manor has all the elements that will create a truly unforgettable stay.

*Pecan Manor Boutique Conference and Function Venue,  
R560, Skeerpoort, 0232.  
P.O.Box 298, Skeerpoort, 0232*

*Contact us: 082 861 6213 / 066 215 9972*

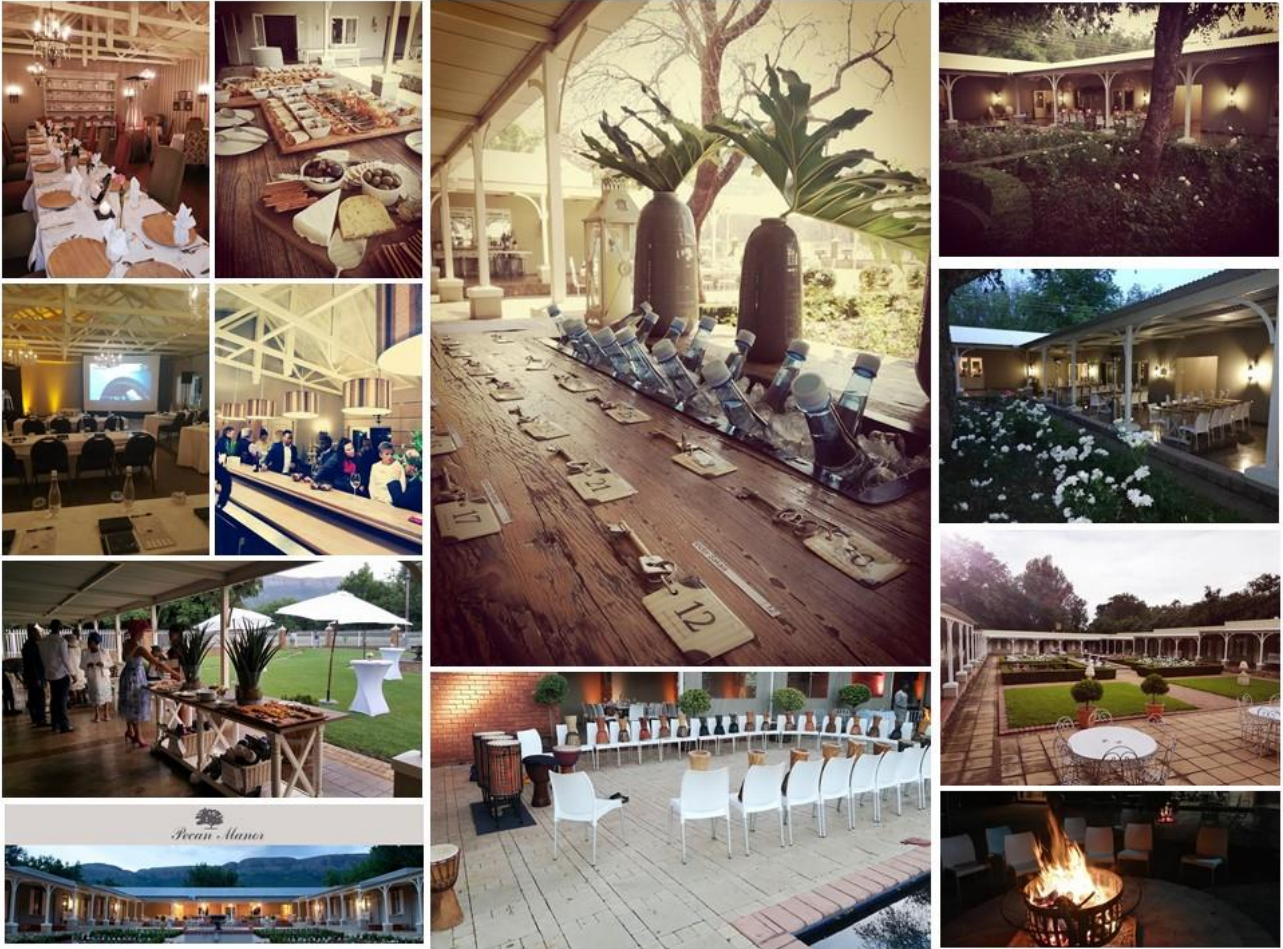
*E-mail: [info@pecanmanor.co.za](mailto:info@pecanmanor.co.za) / [conference@pecanmanor.co.za](mailto:conference@pecanmanor.co.za) / [admin@pecanmanor.co.za](mailto:admin@pecanmanor.co.za)*



[WWW.PECANMANOR.CO.ZA](http://WWW.PECANMANOR.CO.ZA)

TEL. 087 351 8171    FAX. 086 718 6102    EMAIL. [INFO@PECANMANOR.CO.ZA](mailto:INFO@PECANMANOR.CO.ZA)  
GPS. S25°46.004 E27°46.063    ADDRESS. R560, HARTBEESPOORT, NORTH WEST, SOUTH AFRICA

REGISTRATION NO. 1995/02748/23    VAT NO. 4470152280



## Accommodation

- 31 Suites
- 1 Executive Suite
- 13 Suites has air conditioning
- All 32 Suites has panel heaters
- 2 Twin beds
- Bathrooms
- Hair dryers available at reception
- Coffee station
- Plasma Screen
- DSTV (selected channels)
- Desk
- Wireless points that are active at all times with no password required.
- On-suite Bathroom with shower
- 24 Hour Security at main gate and patrolling



## Main Building

- Dining Room
- Coffee Lounge
- Bar
- Pool Table
- Ample safe parking
- Interior Shop
- Lapa with swimming pool

## Conferencing

4 Conference Rooms or 1 Conference room with 3 breakaway rooms

<i>Pecan Manor Room Dimensions</i>				
	<i>Silver Oak</i>	<i>Silver Ash</i>	<i>Wild Oak</i>	<i>Wild Teak</i>
<b>Seating Capacity</b>				
U-Shape	60	24	24	32
Theatre	80	30	30	38
School Room	130	28	28	40
Banquet	100	N/a	N/a	Outdoor
<b>Floor Dimensions</b>				
Length - m	18.5	7.5	7.5	10
Width - m	10	6.7	6.7	7.5
Height - m	3.1	2.85	2.85	3.1
Area - Square m	185	50.25	50.25	75
Power - no of sockets	20	12	13	4
<b>Doors</b>				
Height - m	2.1	2.1	2.1	2.1
Width - m	1.6	1.6	1.6	1.6

## Conference Rates

Valid from 1 January to end December 2019

*(Rates are subject to change)*

### **Overnight Conference Package (24 Hour Package)**

Single:	R 2330.00
Sharing per delegate:	R 1900.00

The 24 Hour package includes the following:

- Overnight accommodation
- Dinner
- Breakfast
- Lunch
- Tea, coffee and snacks twice a day
- Conference venue hire
- Use of available standard conference equipment
- Wi-Fi

### **Full Day conference package:**

R615.00 per person per day

The Full Day Conference Package includes the following:

- Upon arrival tea coffee and & snacks
- Lunch
- Tea, coffee and snacks twice a day
- Conference venue hire
- Use of available conference equipment
- Wi-Fi

### **Half Day Conference Package**

R555.00 per person per day

The Half Day Conference package includes the following:

- Upon arrival tea, coffee & snacks
- Lunch
- A midmorning tea, coffee and snacks break
- Conference venue hire
- Use of available conference equipment
- Wi-Fi

Breakaway rooms: R850.00 per day

Pecan Manor Boma Venue Hire: R3 500.00 per day

## Directions:

### **From Pretoria:**

Travel out on the N4 West - (Toll road to Hartbeespoort Dam – Travelling from town out on Church Street.)

When you are through the second gate you have to get of the toll road.

At the stop turn Left. (Towards Pelindaba) About 100m you will get to a T-junction. Turn Right (Towards Pelindaba)

Keep on going on this road. Keep on going till you get to a three way stop. Go straight over and keep on going.

You will travel past Amazingwe Lodge on your left, Broederstroom garage on your right, Mountain lake SPAR on your right and then Pecan Wood Estate on your right.

About 2km past Pecan Wood is a road turning to your right (Brits R512). Turn right here.

Now you will travel over a long bridge over the Hartbeespoort dam. You will get to a T-junction, turn left.

You will find Magalies Park Holiday resort on your left, 2km from their entrance, go pass Green Leaves on your Left hand side and proceed until you find Pecan Manor Boutique Conference Venue on your left.

### **From Johannesburg:**

Travel out on the cement hi-way towards Roodepoort.

Your first off ramp will be Rivonia road, the second off ramp will be William Nicol road, and the third off ramp is Malibongwe. Take this off ramp and travel towards Lanseria (R512)

Keep on going for about 30km (travel past Lanseria) till you get to a T-junction. Turn left at the T-junction.

You will pass Amazingwe Lodge on your left, Broederstroom garage on your right, pass Mountain Lake SPAR on your right till you get to Pecan Wood Estate on your right. About 2km from Pecan Wood is a road turning off to your right Brits R512, turn right here.

You will be driving over a long bridge over Hartebeespoort Dam. When you get to the T-junction turn Left.

About 2km down the road you will pass Magalies Park resort on your left. 1.8km from their entrance go pass Green Leaves on your Left-hand side and proceed until you find Pecan Manor Boutique Conference Venue on your left.